

Pine View, Gunnislake, PL18

Offers Over £340,000

4 1 1



A smartly presented, four bedroom detached family home set over two floors. The property benefits from a private driveway with a garage, beautiful views over the Tamar Valley and no onward chain.

Situated within the village of Gunnislake and just moments away from the neighbouring villages of St. Anns Chapel and Drakewalls. Amenities within the village include a convenience store, post office, doctors surgery, primary school, pubs and a train station with regular trains to and from Plymouth. The area provides some idyllic countryside walks with Cotehele estate and house, Kit Hill and the River Tamar all nearby.

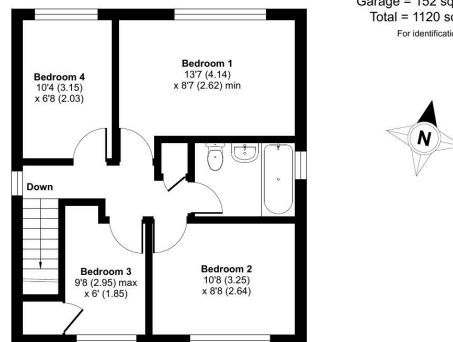
Key Features

- TO ARRANGE A VIEWING PLEASE QUOTE BL0650
- Four Bedrooms
- Private Driveway
- Family Bathrooms & Downstairs Cloakroom
- Popular Village Location
- Detached
- No Onward Chain
- Garage
- Beautiful Views Over Tamar Valley
- Smartly Presented Throughout

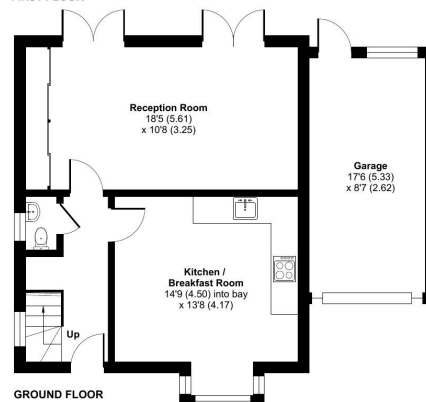
Pine View, Gunnislake, PL18

Approximate Area = 968 sq ft / 89.9 sq m
 Garage = 152 sq ft / 14.1 sq m
 Total = 1120 sq ft / 104 sq m

For identification only - Not to scale



FIRST FLOOR



GROUND FLOOR



Floor plan produced in accordance with RICS Property Measurement Standards incorporating International Property Measurement Standards (IPMS2 Residential). © rickhecom 2024. Produced for Ben Estates TA Ben Langton Powered By exp. REF: 117202.